



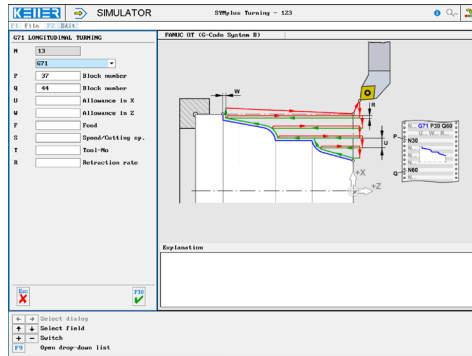
# CONTROLS

Control simulator FANUC 0T (turning, G-Code system B)

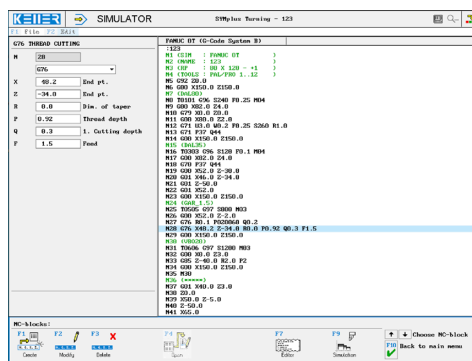


The control related simulator is an additional module for SYMplus. This simulator is used to learn the control system programming. A program generated by a postprocessor can also be edited and simulated.

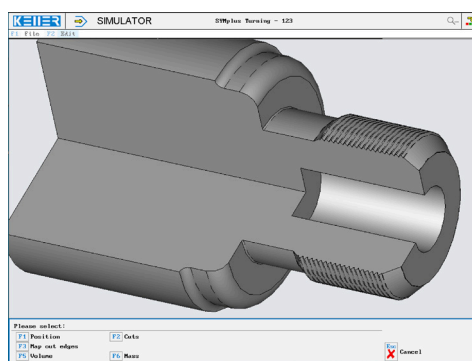
## Help pictures and texts (for all input dialogues)



## NC editor incl. input dialogue and syntax control



## 3D view with sections at any time of the simulation (with zoom and freely rotatable)



## Keyboard information system:

Getting familiar with the meaning of all keys of the control system by moving the mouse cursor over the keys



## COMMANDS/ FUNCTIONS/CYCLES

G00	Rapid traverse
G01	Line
G02	Arc, clockwise
G03	Arc, counter-clockwise
G04	Dwell time
G33	Thread cutting
G40/G41/G42	Radius compensation
G90/G91	Dimensional reference
G92 X/Z	Zero offset
G92 S	Speed limit
G96/G97	Spindle mode
T	Tool call
M	Additional function
Comment	Explanations
X/Z	End point (modal)
G70	Finishing contour
G71	Longitudinal turning
G72	Lateral turning
G76	Thread cutting
G77	Cutting diameter
G78	Cutting thread
G79	Cutting end face
G83	Deep-hole drilling
G84	Tapping
G85	Drilling