



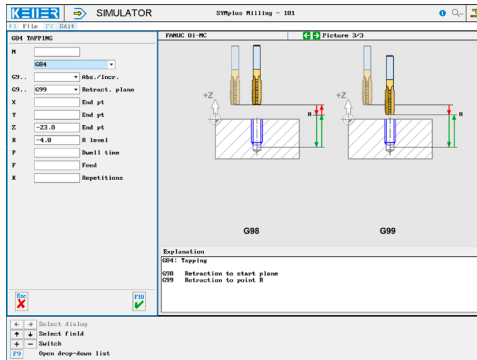
CONTROLS

Control simulator FANUC Oi (milling)

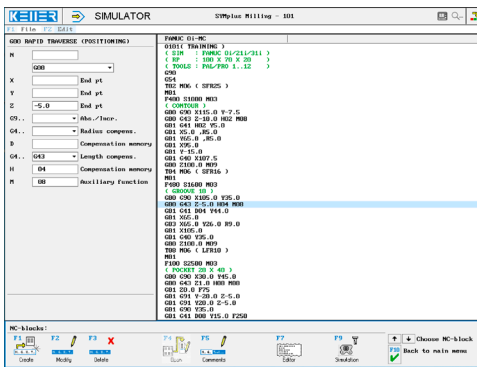


The control related simulator is an additional module for SYMplus. This simulator is used to learn the control system programming. A program generated by a postprocessor can also be edited and simulated.

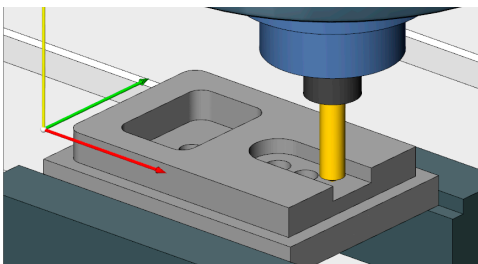
Help pictures and texts (for all input dialogues)



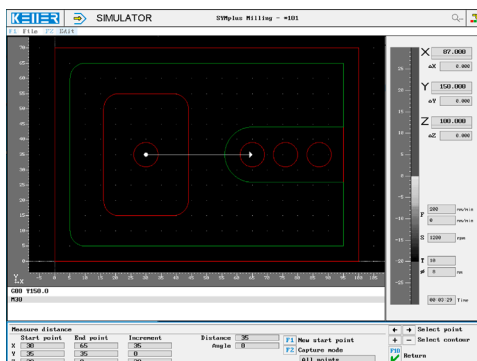
NC editor incl. input dialogue and syntax control



3D simulation with freely adjustable perspective, including continuous display of NC blocks

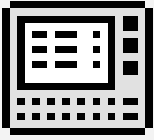


Measuring the workpiece in the 2D simulation (top view)



COMMANDS/ FUNCTIONS/CYCLES

G0	Rapid traverse
G1	Line
G2	Arc, clockwise
G3	Arc, counter-clockwise
G4	Dwell time
G9	Exact positioning
G15	Polar coordinates cancel
G16	Polar coordinates
G28	Return to reference point
G29	Return from reference point
G40/G41/G42	Radius compensation
G43/G44/G49	Length compensation
G50	Scaling mode cancel
G50 1	Programmable mirror image cancel
G51	Scaling mode
G51 1	Programmable mirror image
G52	Local coordinate system setting
G53	Machine coordinates
G54-G59	Workpiece coordinate system
G65	Macro call
#	Parameter
GOTO/IF/WHILE	Jumps and loops
G68	Coordinate rotation
G69	Coordinate rotation end
G73	Deep-hole drilling
G74	Tapping left
G76	Fine boring
G80	Terminate canned cycle
G81	Spot drilling
G82	Countersink
G83	Deep-hole drilling
G84	Tapping
G85	Boring
G86	Boring with stop
G87	Back drilling
G88	Special boring
G89	Boring
G90/G91	Dimensional reference
G92	Set zero point
G94	Feed
M	Additional function
T	Tool call
Comment	Explanations
X/Z/F/S/M	Modal commands



CONTROLS

Interactive training



www.cnc-keller.de



CNC KELLER GmbH



keller.software



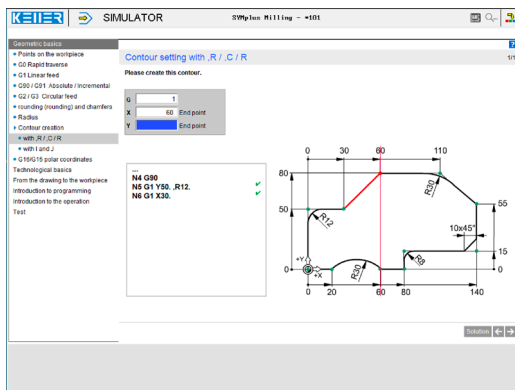
KELLER Software



The FANUC simulator also includes a multimedia, interactive training module. Here, the learner can independently practice programming the FANUC controls and take a test in the end.

The contents are divided into 4 main chapters:

- Geometrical basics
- Technological basics
- From the drawing to the workpiece
- Introduction to programming
- Introduction to the operation

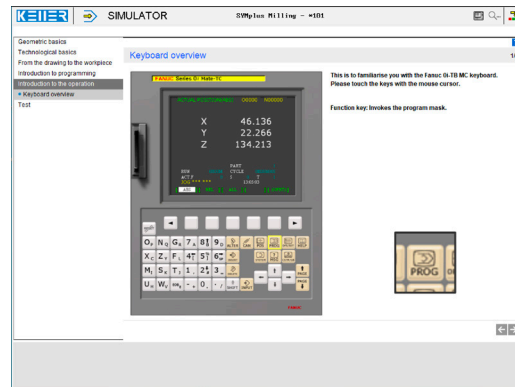


Exercises are included for the following functions/topics, among others:

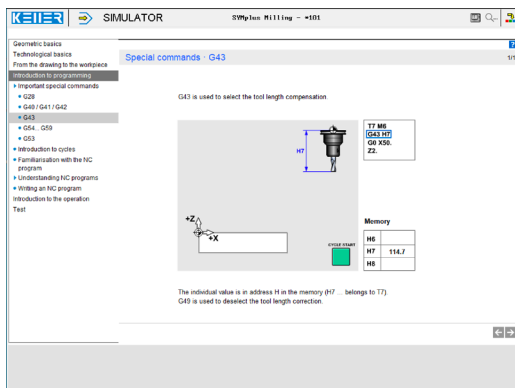
- G0/G1/G2/G3
- Contour creation with rounding and chamfer
- G15/G16
- G28
- G40/G41/G42/G43
- G53/G54-G59
- G81, ...

In addition, there is general learning content on cutting data with numerous practical examples and a final test with randomized tasks for all chapters.

You learn the meaning of each key ...



In this exercise you learn how to use the G43 command for length compensation using an animation.



... and you can check yourself in a test.

Test · Operating the Fanuc controls · Key functions

Assign the correct meanings to the keys using Drag&Drop.

Shift key		
Softkey		
The content of the keyboard buffer memory is applied as final.		
Resetting the CNC, resetting an alarm, etc.		
Toggling softkey bars		
Invoking the help function		

Cycles are introduced here. Later you „write“ your own small programs interactively (guided by the software).

