

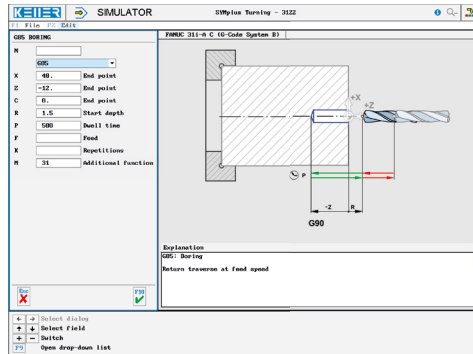
# STEUERUNG

Simulator „FANUC 31i-A“ (G-Code B, incl. C axis)

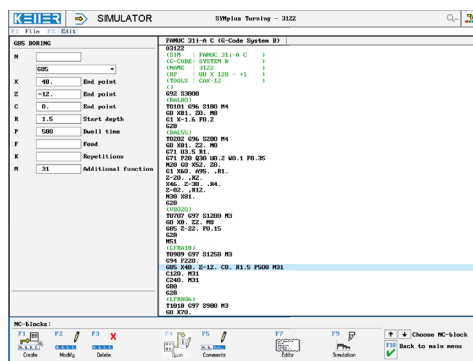


The control related simulator is an additional module for SYMplus. This simulator is used to learn the control system programming. A program generated by a postprocessor can also be edited and simulated.

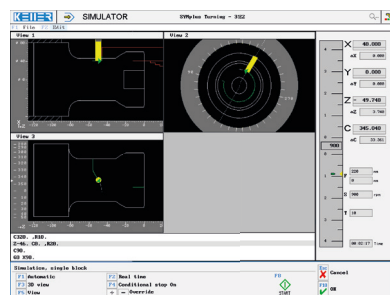
## Help pictures and texts (for all input dialogues)



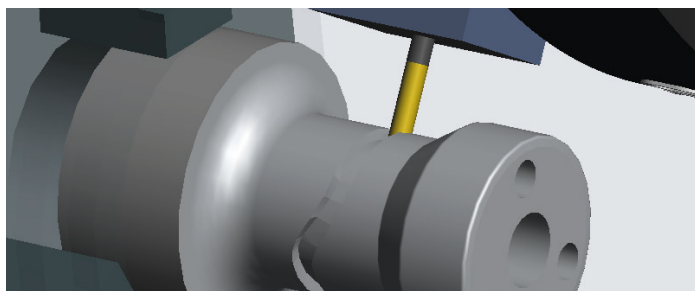
## NC editor incl. input dialogue and syntax control



## 2D Simulation with position display (real time, fast mode, single block with path preview, cut, ...); C axis as line graphics; 3D view



## 3D simulation incl. display of the turret



## COMMANDS/ FUNCTIONS/CYCLES

G0	Rapid traverse
G1	Line
G2	Arc, clockwise
G3	Arc, counter-clockwise
G4	Dwell time
G7.1	Cylindric interpolation
G12.1(G13.1)	Polar coordinate interpolation
G17/G18/G19	Machining level
G28	Approach reference point
G22	Thread cutting
G40/G41/G42	Radius compensation
G52	Local coordinate system
G53	Machine coordinates
G54-G59	Zero offset
#	Parameter
GOTO/IF/WHILE	Jumps and loops
G70	Finishing contour
G71	Longitudinal roughing of contour
G72	Face roughing of contour
G73	Parallel roughing of contour
G74	Face recessing
G75	Longitudinal recessing
G76	Threading
G77	Longitudinal roughing (1 cut)
G78	Thread cycle (1 cut)
G79	Face roughing (1 cut)
G80	Finish cycle
G83	Deep hole drilling
G84	Tapping
G85	Boring
G87	Deep hole drilling (X axis)
G88	Tapping (X axis)
G89	Drilling (X axis)
G90/G91	Dimensional reference Absolute/incremental
G92 S	Speed limitation
G92 Z	Set local coordinates
G94	Feed per minute
G95	Feed per revolution
G96	Constant cutting speed
G97	Constant speed
Comment	Explanations
T	Tool call
M	Additional function
M50/M51	C axis on/off
M98	Program call
X/Z/F/S/M	Modal commands