



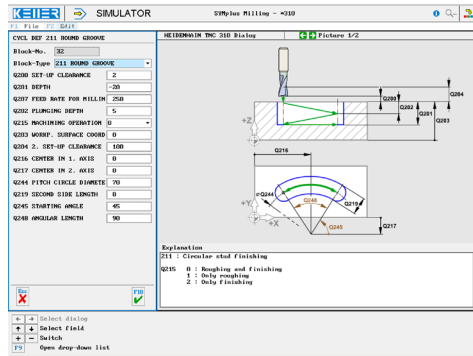
# CONTROLS

Control simulator HEIDENHAIN TNC310 Dialog

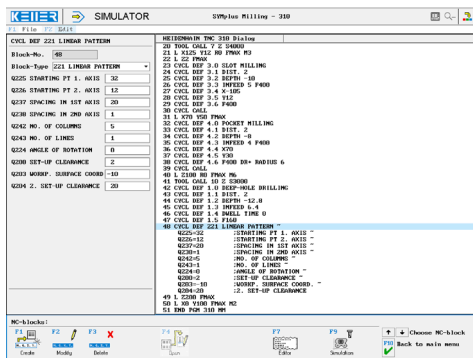


The control related simulator is an additional module for SYMplus. This simulator is used to learn the control system programming. A program generated by a postprocessor can also be edited and simulated.

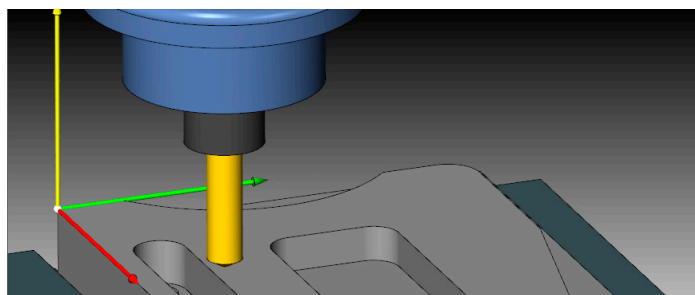
Help pictures and texts (for all input dialogues)



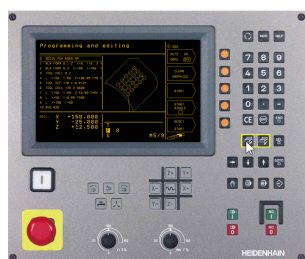
NC editor incl. input dialogue and syntax control



3D simulation with freely adjustable perspective, including continuous display of NC blocks



Keyboard information system: Getting familiar with the meaning of all keys of the control system by moving the mouse cursor over the keys



## COMMANDS/ FUNCTIONS/CYCLES

- |              |   |
|--------------|---|
| BLK FORM     | Blank form definition                     |
| L            | Linear movement in feed                   |
| L FMAX       | ... in rapid traverse                     |
| L FAUTO      | ...with automatic feed                    |
| CC           | Circle center                             |
| C            | Circle center around centre point CC      |
| CR           | Circle with radius R                      |
| CT           | Circle tangential                         |
| LP           | Linear movement polar                     |
| LP FMAX      | ... in rapid traverse                     |
| CP           | Circle polar                              |
| CTP          | Circle tangential polar                   |
| CHF          | Chamfer                                   |
| RND          | Rounding                                  |
| APPR         | Approaching the contour                   |
| DEP          | Departure of contour                      |
| TOOL DEF     | Tool definition                           |
| TOOL CALL    | Tool call                                 |
| LBL SET      | Label no.                                 |
| LBL CALL     | Label call                                |
| CYCL CALL    | Cycle call                                |
| M            | Additional functions                      |
| X/Y/Z        | Movement parallel to the axis during feed |
| X/Y/Z FMAX   |   |
| CALL PGM     | Call of sub-program                       |
| CYCL DEF ... | Cycle definition                          |

- 1.0 DEEP-HOLE DRILLING
- 2.0 TAPPING
- 3.0 SLOT MILLING
- 4.0 POCKET MILLING
- 5.0 CIRCULAR MILLING
- 7.0 ZERO OFFSET
- 8.0 MIRROR IMAGE
- 9.0 DWELL TIME
- 10.0 ROTATION
- 11.0 SCALING FACTOR
- 200 DRILLING
- 201 REAMING
- 202 FINE BORING
- 203 UNIVERSAL DRILLING
- 210 RECIPROCATING GROOVE
- 211 ROUND GROOVE
- 212 POCKET FINISHING
- 213 STUD FINISHING
- 214 CIRC. POCKET FINISHING
- 215 CIRC. STUD FINISHING
- 220 CIRCULAR PATTERN
- 221 LINEAR PATTERN
- 230 MULTIPASS MILLING