



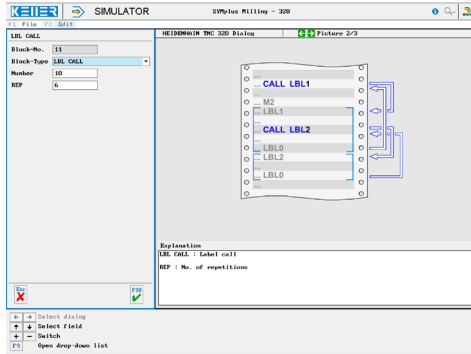
CONTROL

Control simulator HEIDENHAIN TNC320 Dialog

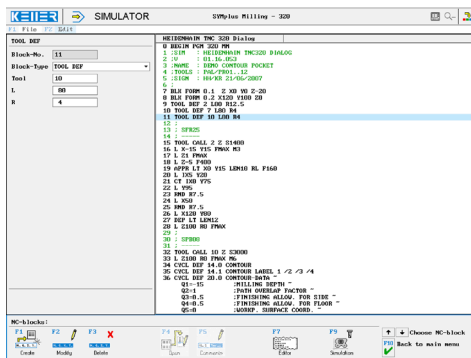


The control related simulator is an additional module for SYMplus. This simulator is used to learn the control system programming. A program generated by a postprocessor can also be edited and simulated.

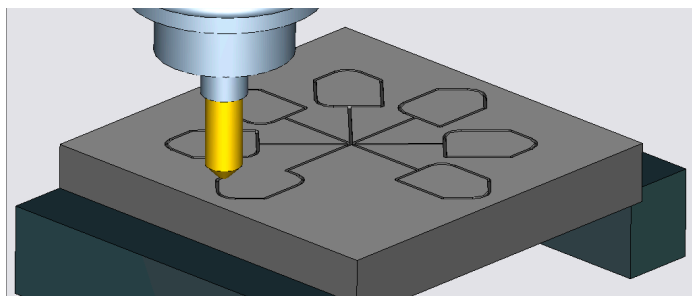
Help pictures and texts (for all input dialogues)



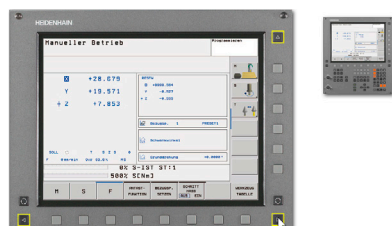
NC editor incl. input dialogue and syntax control



3D view with sections at any time of the simulation (with zoom and freely rotatable), measuring function, real-time simulation in 2D and 3D



Keyboard information system: Getting familiar with the meaning of all keys of the control system by moving the mouse cursor over the keys



COMMANDS/ FUNCTIONS/CYCLES

BLK FORM	Blank form definition
L	Linear movement in feed
L FMAX	... in rapid traverse
L FAUTO	...with automatic feed
CC	Circle center
C	Circle center around centre point CC
CR	Circle with radius R
CT	Circle tangential
LP	Linear movement polar
LP FMAX / FAUTO	... in rapid traverse/ with automatic feed
CP / CTP	Circle polar/ Circle tangential polar
CHF / RND	Chamfer/Rounding
APPR	Approaching the contour
DEP	Departure of contour
TOOL DEF	Tool definition
TOOL CALL	Tool call
LBL SET	Label no.
LBL CALL	Label call
CYCL CALL	Cycle call
STOP	Stop the program
M	Additional functions
X/Z/Z	Movement parallel to the axis during feed
COMMENT	Explanations
STRUCTURE	
CALL PGM	Call of sub-program
CYCL DEF ...	Cycle definition

1.0 DEEP-HOLE DRILLING	206 TAPPING NEW
2.0 TAPPING	207 RIGID TAPPING NEW
3.0 SLOT MILLING	208 BORE MILLING
4.0 POCKET MILLING	209 TAPPING W/ CHIP BRKG
5.0 CIRCULAR MILLING	210 RECIPROCATING GROOVE
7.0 ZERO POINT	211 ROUND GROOVE
8.0 MIRROR IMAGE	212 POCKET FINISHING
9.0 DWELL TIME	213 STUD FINISHING
10.0 ROTATION	214 CIRC. POCKET FINISHING
11.0 SCALING FACTOR	215 CIRC. STUD FINISHING
14.0 CONTOUR	220 CIRCULAR PATTERN
15.0 PILOT DRILLING	221 LINEAR PATTERN
16.0 CONTOUR MILLING	230 MULTIPASS MILLING
20.0 CONTOUR DATA	232 FACE MILLING
21.0 PILOT DRILLING	251 RECTANGULAR POCKET*
22.0 ROUGH-OUT	252 CIRCULAR POCKET*
23.0 FLOOR FINISHING	253 SLOT MILLING*
24.0 SIDE FINISHING	254 ROUND GROOVE*
200 DRILLING	
201 REAMING	
202 FINE BORING	
203 UNIVERSAL DRILLING	

* REVISION 34055103