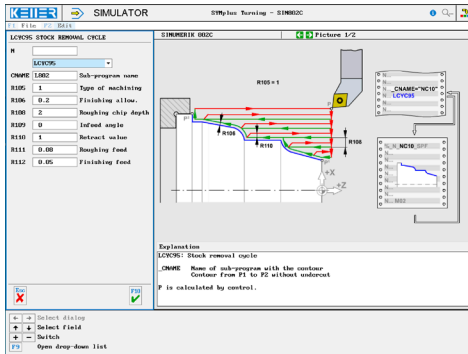
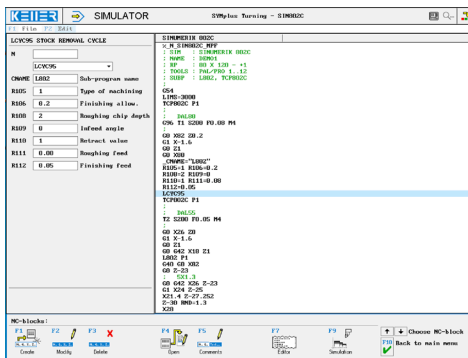


The control related simulator is an additional module for SYMplus. This simulator is used to learn the control system programming. A program generated by a postprocessor can also be edited and simulated.

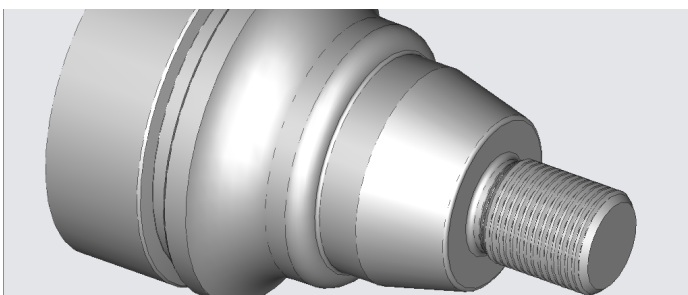
## Help pictures and texts (for all input dialogues)



## NC editor incl. input dialogue and syntax control



## 3D view with sections at any time of the simulation (with zoom and freely rotatable)



## Keyboard information system: Getting familiar with the meaning of all keys of the control system by moving the mouse cursor over the keys



## COMMANDS/ FUNCTIONS/CYCLES

G0	Rapid traverse
G1	Line
G1 (A,A,X,Z)	Contour with two angles
G2	Arc, clockwise
G3	Arc, counter-clockwise
G4	Dwell time
G17/G18	Plane
G26	Speed limitation
LIMS	Speed limitation
G33	Thread cutting
G40/G41/G42	Radius compensation
G53	Zero offset off
G54-G57	Zero offset
G500	Zero offset off (modal)
G60/G64	Exact position/rounding
G90/G91	Dimensioning reference
G95/G96/G87	Feed in mm/constant cutting speed/ constant speed
G158	Zero offset absolute
G900/G901	Feed correction off/on
Comment	Explanations
UP-CALL	Sub-program call
R	Parameter list
T	Tool call
LCYC82	Drilling/countersinking
LCYC83	Deep-hole drilling
LCYC840	Tapping with
LCYC85	Reaming
LCYC93	Recessing cycle
LCYC94	Undercutting cycle
LCYC95	Stock removal
LCYC97	Thread cutting cycle
_CNAME	Sub-program name
X/Y/Z/F/S/M	Modal commands