

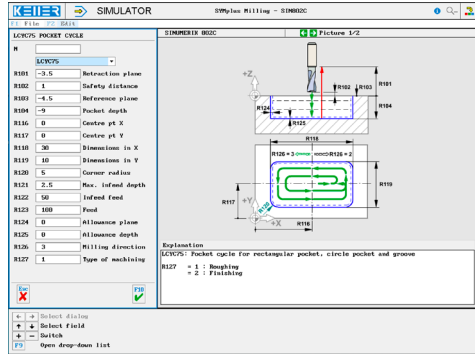
# CONTROLS

Control simulator SINUMERIK 802C (milling)

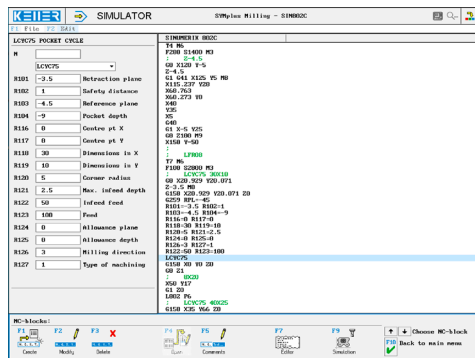


The control related simulator is an additional module for SYMplus. This simulator is used to learn the control system programming. A program generated by a postprocessor can also be edited and simulated.

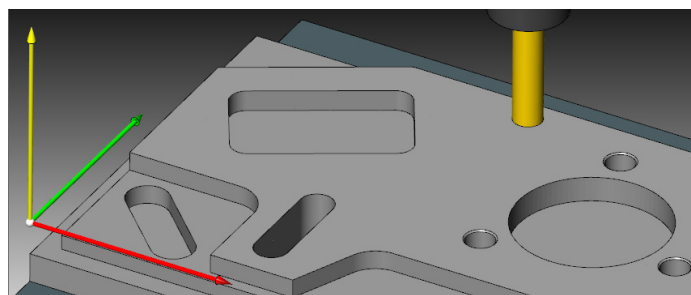
## Help pictures and texts (for all input dialogues)



## NC editor incl. input dialogue and syntax control



## 3D view with sections at any time of the simulation (with zoom and freely rotatable)



## Keyboard information system: Getting familiar with the meaning of all keys of the control system by moving the mouse cursor over the keys



## COMMANDS/ FUNCTIONS/CYCLES

- G0 Rapid traverse
- G1 Line
- G2 Arc, clockwise
- G3 Arc, counter-clockwise
- G4 Dwell time
- G17 Plane
- G33 Thread cutting
- G40/G41/G42 Radius compensation
- G53 Zero offset off
- G54-G57 Zero offset
- G500 Zero offset off (modal)
- G60/G64 Exact position/rounding
- G75 Approach to fixed point
- G90/G91 Dimensioning reference
- G94 Feed in mm/min.
- G158 Zero offset absolute
- G258 Rotation absolute
- G239 Rotation incremental
- G900/G901 Feed correction off/on
- Comment Explanations
- UP-CALL Sub-program call
- R Parameter list
- T Tool call
- LCYC60 Drilling pattern on line
- LCYC61 Drilling pattern on circle
- LCYC75 Pocket cycle
- LCYC82 Drilling/spot facing
- LCYC83 Deep hole drilling
- LCYC84 Tapping
- LCYC840 Tapping
- LCYC85 Boring
- X/Y/Z/F/S/M Modal commands