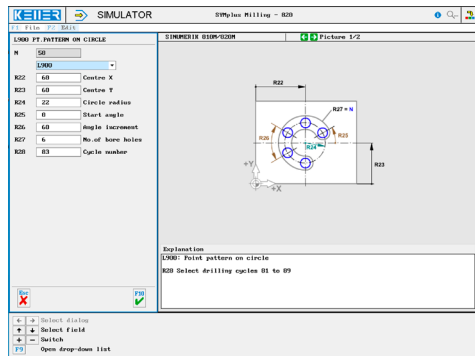
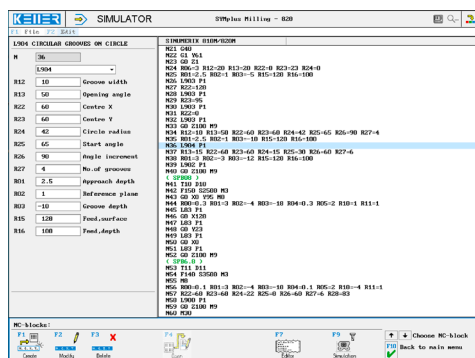


The control related simulator is an additional module for SYMplus. This simulator is used to learn the control system programming. A program generated by a postprocessor can also be edited and simulated.

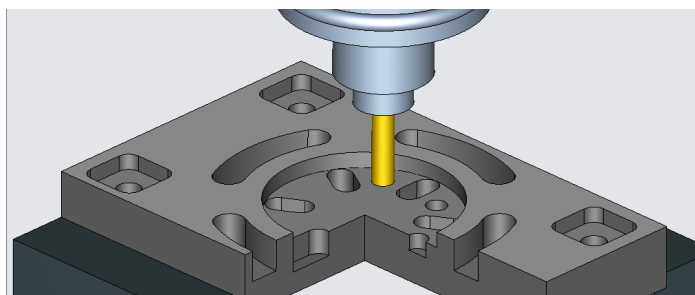
Help pictures and texts (for all input dialogues)



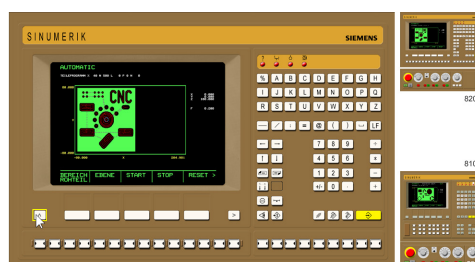
NC editor incl. input dialogue and syntax control



3D view with sections at any time of the simulation (with zoom and freely rotatable)



Keyboard information system: Getting familiar with the meaning of all keys of the control system by moving the mouse cursor over the keys



COMMANDS/ FUNCTIONS/CYCLES

G0	Rapid traverse
G1	Distance
G2	Arc, clockwise
G3	Arc, counter-clockwise
G4	Dwell time
G10	Rapid traverse (polar)
G11	Distance (polar)
G12	Arc, clockwise (polar)
G13	Arc, counter-clockwise (polar)
G17	Plane
G40/G41/G42	Radius compensation
G54-G57, G53	Zero offset
G59	Zero point offset absolute
G63/G60	Compensation chuck
G90/G91	Dimension reference
Comment	Explanations
L	Subprogram call
M	Additional function
R	Parameter list
T	Tool call
X/Y/Z/F/S/M	Modal commands
G80	Undo G81 ... G89 sel.
L81	Drilling/centering
L82	Drilling/ spot facing
L83	Deep hole drilling
L84	Tapping
L85 ... L89	Boring 1...5
L900	Point pattern on circle
L901	Groove milling on circle
L902	Slots on circle
L903	Rectangular pocket
L904	Circular grooves on circle
L905	Single position
L906	Point pattern on straight line
L930	Circular pocket