

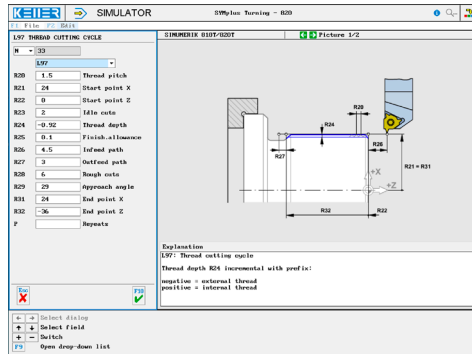
CONTROLS

Control simulator SINUMERIK 810T/820T (turning)

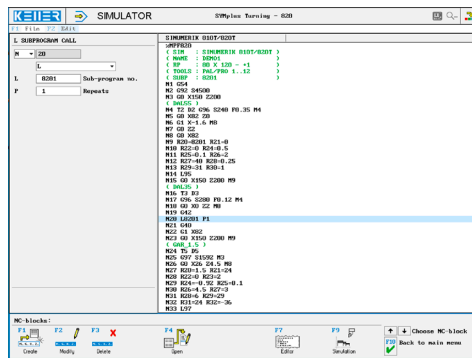


The control related simulator is an additional module for SYMplus. This simulator is used to learn the control system programming. A program generated by a postprocessor can also be edited and simulated.

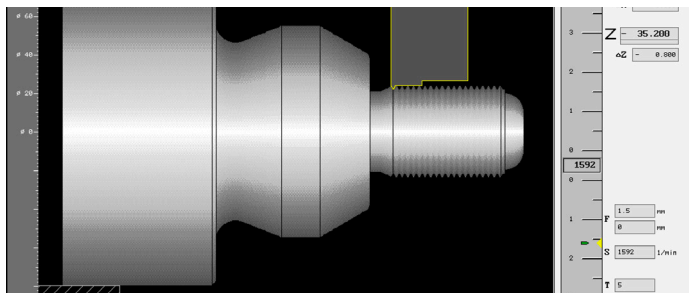
Help pictures and texts (for all input dialogues)



NC editor incl. input dialogue and syntax control

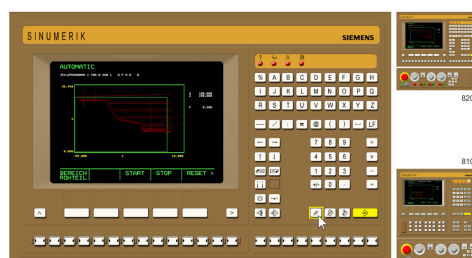


Optimal control through simulation with position display (real time, fast run, single block with path preview, ...)



Keyboard information system:

Getting familiar with the meaning of all keys of the control system by moving the mouse cursor over the keys



COMMANDS/ FUNCTIONS/CYCLES

G0	Rapid traverse
G1	Distance
G1 (A,A,X,Z)	Contour definition
G2	Arc, clockwise
G3	Arc, counter-clockwise
G4	Dwell time
G33	Thread cutting
G40/G41/G42	Radius compensation
G53-G57	Zero offset
G58/G59	Zero offset
G90/G91	Dimension reference
G92	Speed limitation
G95	Feed per revolution
G96/G97	Spindle mode
Comment	Explanations
L	Subprogram call
M	Additional function
R	Parameter list
T	Tool call
L93	Cut-in cycle
L95	Chip remove with undercut
L96	Chip remove without undercut
L97	Thread cutting cycle
L98	Deep drilling
X/Z/F/S/M	Modal commands