

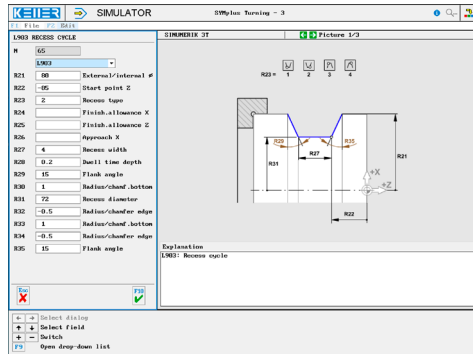
CONTROLS

Control simulator „SINUMERIK 3T“ (turning)

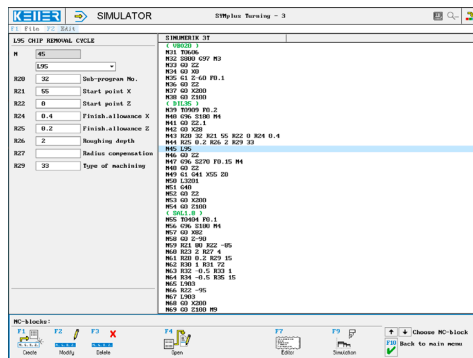


The control related simulator is an additional module for SYMplus. This simulator is used to learn the control system programming. A program generated by a postprocessor can also be edited and simulated.

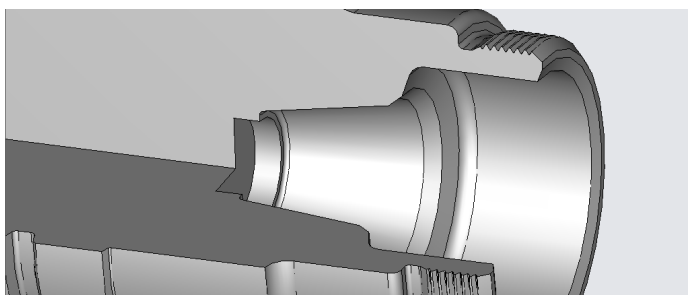
Help pictures and texts (for all input dialogues)



NC editor incl. input dialogue and syntax control



3D view with section at any time of the simulation (with zoom and freely rotatable)



Keyboard information system: Getting familiar with the meaning of all keys of the control system by moving the mouse cursor over the keys



COMMANDS/ FUNCTIONS/CYCLES

- G0 Rapid traverse
- G1 Line
- G1 (A,A,X,Z) Contour definition
- G2 Arc, clockwise
- G3 Arc, counter-clockwise
- G4 Dwell time
- G33 Threading
- G40/G41/G42 Radius compensation
- G53-G57 Zero point offset
- G59 Additive zero point offset
- G90/G91 Dimensional reference
- G92 Speed limitation
- G96/G97 Spindle mode
- Comment Explanations
- L Sub-program call-up
- M Additional function
- R Parameter list
- T Tool call-up
- L94 Roughing axis parallel
- L95 Chip removal cycle
- L96 Thread cycle
- L97 Point pattern on a circle
- L98 Deep hole drilling
- L903 Recess cycle
- X/Z/F/S/M Modal commands